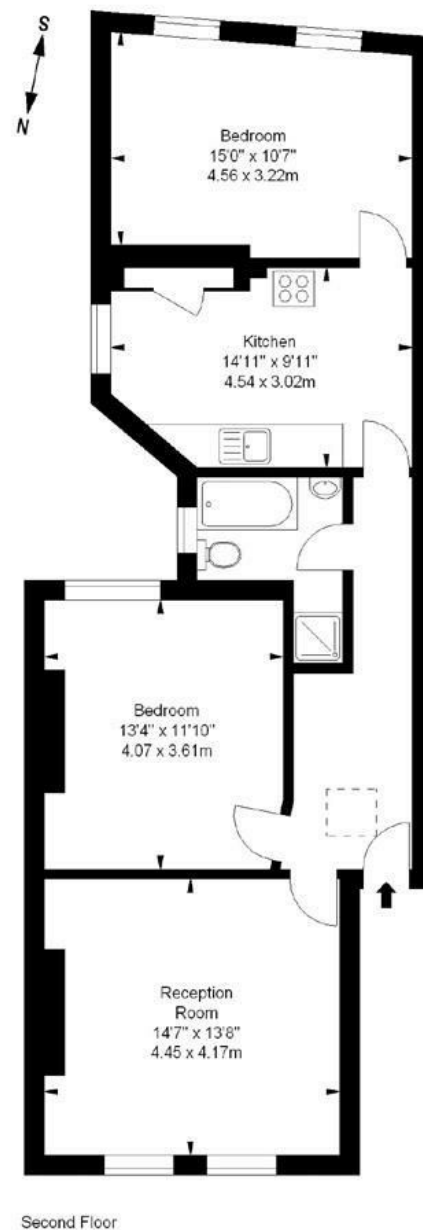


Warwick Mansions, Putney, SW15

A superbly located and immaculately presented two double bedroom flat on the top floor of this small mansion block in the heart of West Putney and moments from the river. Offered on an unfurnished basis, the accommodation comprises an entrance hallway, bright reception room, eat-in kitchen, two double bedrooms and smart bathroom with bath and separate shower cubicle. Warwick Mansions has the added benefit of bike storage and is ideally located for all the amenities of the Lower Richmond Road as well as Putney High Street. Available late March/April 2026.

Warwick Mansions, SW15

Approximate gross internal area
822 sq ft / 76.36 sq m



Second Floor

Illustration For Identification Purposes Only. Not To Scale
*Floorplan Drawn According To RICS Guidelines



- MANSION BLOCK
- EAT-IN KITCHEN
- SMART BATHROOM
- PRIME LOCATION
- COUNCIL TAX BAND D
- RECEPTION ROOM
- TWO DOUBLE BEDROOMS
- BIKE STORAGE
- EPC C

Per Calendar Month
£2,100 Per Calendar Month



DISCLAIMER•These particulars are intended to give a fair and substantially correct overall description for the guidance of intending purchasers and do not constitute an offer or part of a contract. Prospective purchasers and/or lessees ought to seek their own professional advice.
•All descriptions, dimensions, areas, references to condition and necessary permissions for use and occupation and other details are given in good faith and are believed to be correct, but any intending purchasers should not rely on them as statements or representations of fact, but must satisfy themselves by inspection or otherwise as to the correctness of each of them.
•All measurements are approximate.

